



Performance Analysis and Benchmarking - Children Looked After

Contents

Looked After Children - Volumes and Activity

- OP389 Children in care including unaccompanied asylum seeking childrer
- OP389a The rate of Children in care per 10,000 pop
- Op415 Children becoming looked after
- Op416 Children ceasing to be looked after
- OP457 Number of LAC who ceased to be looked after who had been looked after for less than a month
- OP414 Percentage of Children becoming looked after previously subject to CP plan
- OP458 Total No. days children have been in care (Excluding placed at home)
- HY32 Percentage of children placed in Haringey Provision
- Op382 Children in Care visits
- Op417 Care Proceedings Initiated- (No. of children)
- Op 419 Number of children missing/absconded from care at any point in the month
- OP386 (NI 66) Children in care cases which were reviewed within required timescales

Looked After Children - Stability of Placements

- HY62 Stability of placements of looked after children: number of moves
- Op63 Stability of placements of looked after children: length of placement

Care Leavers

- Op147 Care leavers in suitable accommodation
- Op 148 Care leavers in education, employment or training

Adoption and Special Guardianship Orders

- Op 418 Number of adoptions/special guardianship orders
- Op 418a Number of adoptions
- Op 418b Number of special guardianship orders
- Op391 (NI61) Timeliness of placements of looked after children for adoption following an agency decision that the child should be placed for adoption

HY483 Average days from becoming looked after to being placed for adoption for children adopted in period

Op486 Placed for adoption within 21 months of becoming looked after

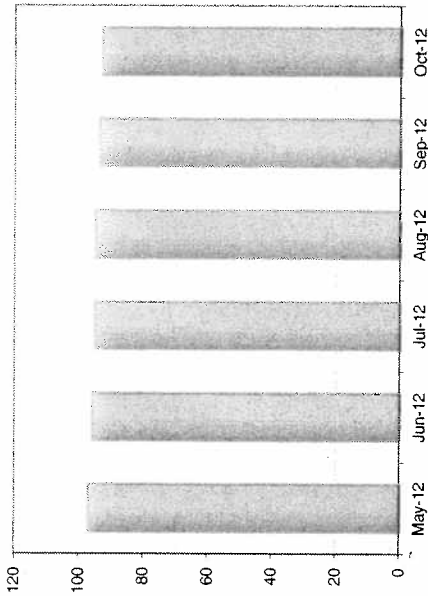
For further long term trend data, benchmarking, contextual data and performance against national thresholds, please refer to Appendix B, the Adoption Scorecard quarterly update. Please note that this is only updated quarterly.

Where available, benchmarking is provided for England, London and/or Haringey's Statistical Neighbours. Haringey's Statistical Neighbours group is defined by Ofsted based on socio-demographic information relating specifically to Children's Services and comprises Croydon, Greenwich, Hackney, Hammersmith and Fulham, Islington, Lambeth, Lewisham, Southwark, Waltham Forest and Wandsworth. The averages provided for benchmarking in this report are simple means.

This section contains a series of measures which help to provide a picture of the current children in care cohort and the service provided to them, covering the following areas: the numbers of children in care (Op389, Op389a); the movement of children in and out of care and their circumstances (Op415, Op416, Op457, Op414); service activity (Op458, HY32, Op382, Op417, Op419, Op386).

OP389 Children in care including unaccompanied asylum seeking children
OP389a The rate of Children in care per 10,000 pop

Recent trend (last 6 months)	Key	May-12	Jun-12	Jul-12	Aug-12	Sep-12	Oct-12	Traffic Light
Haringey Number of CiC		558	553	549	549	540	536	
Haringey Rate per 10,000 pop		97	96	95	95	94	93	Data Only
Children placed within Haringey		-	-	-	26.00%	24%	-	
Children placed outside Haringey		-	-	-	74.00%	76%	-	



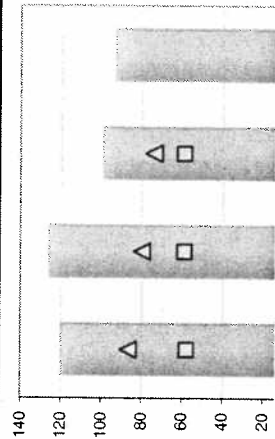
Performance Comment

- There were 536 children in care on the last day of October (510 excluding unaccompanied minors).
- This equates to a rate of 93 per 10,000 population, a significant reduction compared to this time last year (108).
- The rate remains higher than the statistical neighbour average (74 as at March 2012) and significantly higher than the England average (59). Please note that all rates for 2011/12 and from April 2012 have been revised in line with new population estimates for Mid-Year 2011 including adjustments to Statistical Neighbour and England rates.
- The average number of children in care in our statistical neighbours was 426 (31st March 2012).

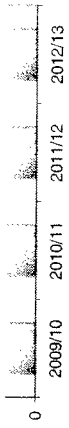
Service Comment

The numbers and rate of children in care continue to be monitored to ensure that numbers are reduced appropriately and children remain safeguarded at home.

Long term trend (last 6 years)	Key	2007/08	2008/09	2009/10	2010/11	2011/12	2012/13	Traffic Light
Haringey Number of CiC		427	492	591	618	574	536	
Haringey Rate per 10,000 pop		-	-	120	126	99	93	Data Only
Statistical Neighbours Rate per 10,000	Δ	97	88	87	80	74	-	

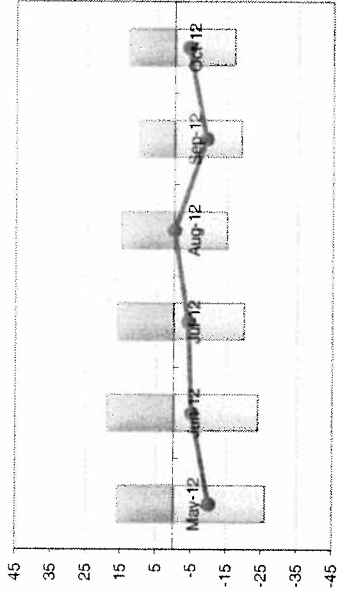


England Rate per 10,000	<input type="checkbox"/>	54	55	58	59	59	-
----------------------------	--------------------------	----	----	----	----	----	---



Op415 Children becoming looked after and
Op416 Children ceasing to be looked after

Recent trend (last 6 months)	Key	May-12	Jun-12	Jul-12	Aug-12	Sep-12	Oct-12	Traffic Light
Haringey (becoming)		16	19	16	15	10	13	Data Only
Haringey (ceasing)		-26	-24	-20	-15	-19	-17	
<i>Haringey Net Increase / Decrease</i>	●	-10	-5	-4	0	-9	-4	



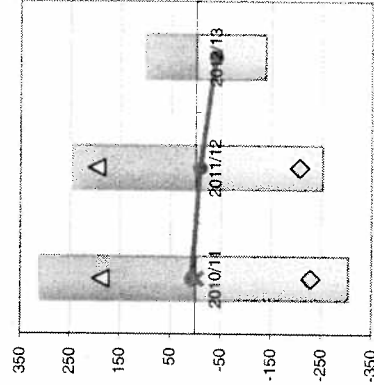
Performance Comment

- 13 children became looked after in October and 17 ceased to be looked after.
- 100 children have become looked after in the year to date and 139 have ceased to be looked after.
- The cohort has decreased by 39 children in the year to date.

Service Comment

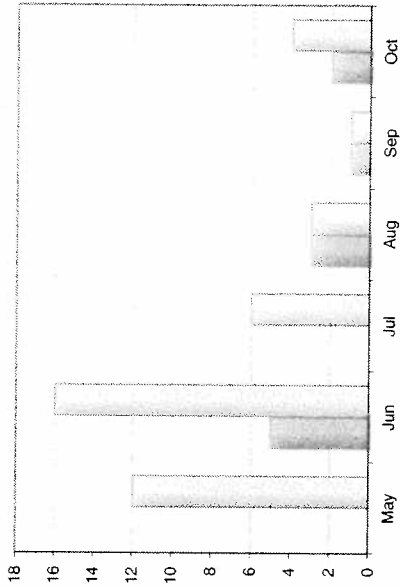
Stability in the long term social work teams has resulted in more timely management of care plans. Children are moving to more permanent care arrangements such as Special Guardianship and Adoption and where appropriate children are returning to live with family members.

Long term trend (last 6 years)	Key	2007/08	2008/09	2009/10	2010/11	2011/12	2012/13	Traffic Light
Haringey (becoming)		-	-	-	311	245	100	Data Only
Haringey (ceasing)		-	-	-	-304	-253	-139	
<i>Haringey Net Increase / Decrease</i>	●	-	-	-	7	-8	-39	
<i>Stat. Neighbours (becoming)</i>	△	192	193	216	189	197	-	
<i>Stat. Neighbours (ceasing)</i>	◇	-212	-208	-219	-229	-207	-	
<i>Statistical Neighbours Net Increase</i>	✱	-20	-15	-3	-40	-10	-	



OP457 Number of looked after children who ceased to be looked after who had been looked after for less than a month

Recent trend (last 6 months)	Key	May-12	Jun-12	Jul-12	Aug-12	Sep-12	Oct-12	Traffic Light
Haringey		0	5	0	3	1	2	Data Only
Previous Year	Key	May-11	Jun-11	Jul-11	Aug-11	Sep-11	Oct-11	
Haringey (previous year)		12	16	6	3	7	4	



Performance Comment

- In the year to date, 15 children have been looked after for less than a month before ceasing to be looked after, compared to 46 for the same period last year.

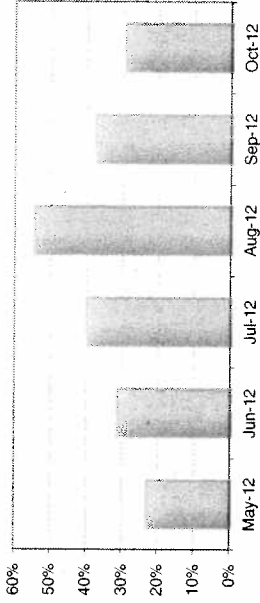
Service Comment

The service has focused on reducing the number of short term admissions to care where alternative safe arrangements can be made whilst assessments are undertaken. It is felt that this reflects better systems to manage children on the edge of care with better engagement with agencies such as the police.

There is currently no available benchmarking for this indicator. Strategy and Business Intelligence undertake regular environment scanning to ensure that benchmarking data is as complete and up to date as possible

OP414 Percentage of Children becoming looked after previously subject to Child Protection plan

Recent trend (last 6 months)	Key	May-12	Jun-12	Jul-12	Aug-12	Sep-12	Oct-12	Traffic Light
Haringey		23%	31%	40%	55%	38%	29%	Data Only



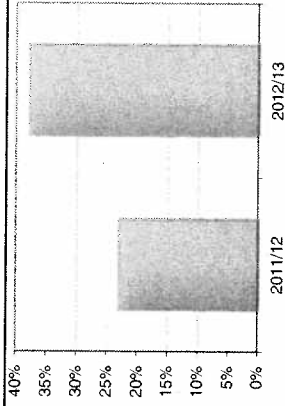
Performance Comment

The year to date figure is 38% (34 out of 90 children), up from 23% last year.

Service Comment

Caring for children away from their family home should be used when it is not possible for children to remain safely and securely at home. Child protection plans are put in place where there are significant concerns about a child's welfare, it is therefore expected that a high proportion of children and families would have been supported whilst being subject to a protection plan before they came into care.

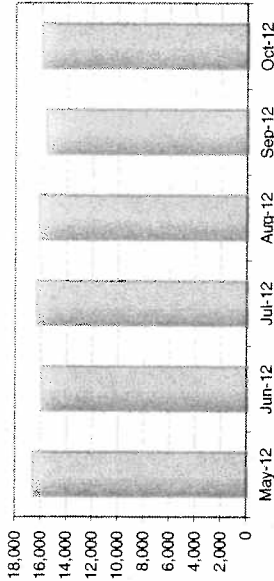
Long term trend (last 6 years)	Key	2007/08	2008/09	2009/10	2010/11	2011/12	2012/13	Traffic Light
Haringey		-	-	-	-	23%	38%	Data Only



There is currently no available benchmarking for this indicator. Strategy and Business Intelligence undertake regular environment scanning to ensure that benchmarking data is as complete and up to date as possible

OP458 Total No. days children have been in care (Excluding placed at home)

Recent trend (last 6 months)	Key	May-12	Jun-12	Jul-12	Aug-12	Sep-12	Oct-12	Traffic Light
Haringey		16,631	15,968	16,388	16,183	15,557	15,942	Data Only



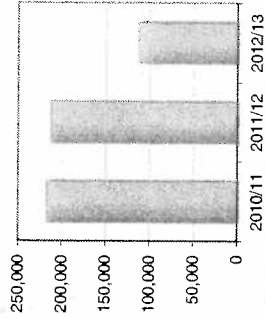
Performance Comment

- The total number of days in care in October was 15,942, higher than the previous month.
- The year to date figure of 113,018 is significantly lower than the same time last year (126,404).
- This indicator was introduced to track the volume of work as the number of looked after children would not capture children becoming looked after or ceasing to be looked after during the month which this measure does.
- This measure is looked at alongside children who ceased to be looked after who had been looked after for less than a month where there is a decreasing trend.

Service Comment


The data demonstrates the number of nights in care which is also another method of monitoring the use of care over time. The figures suggest that we are managing the churn appropriately with a reduction over time and finding other solutions for these children.

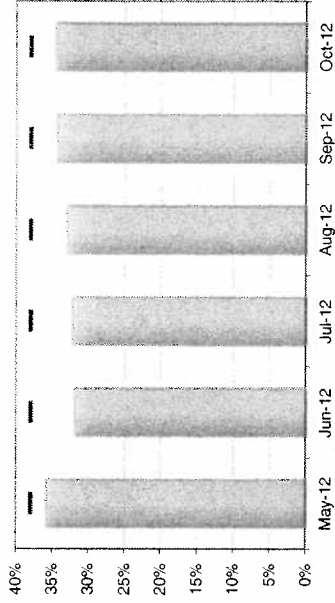
Long term trend (last 6 years)	Key	2007/08	2008/09	2009/10	2010/11	2011/12	2012/13	Traffic Light
Haringey		-	-	-	217,488	212,812	113,018	Data Only



There is currently no available benchmarking for this indicator. Strategy and Business Intelligence undertake regular environment scanning to ensure that benchmarking data is as complete and up to date as possible

HY32 Percentage of children placed in Haringey Provision


Recent trend (last 6 months)	Key	May-12	Jun-12	Jul-12	Aug-12	Sep-12	Oct-12	Traffic Light
Haringey		35.8%	31.9%	32.2%	33.0%	34.3%	34.5%	Amber 
Haringey Target	-	38%	38%	38%	38%	38%	38%	

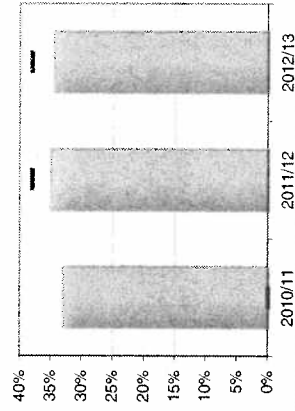


Performance Comment

- The percentage in Haringey Provision has declined since April and remains below the 38% target.
- 185 out of 536 children were in Haringey provision in October, compared to 202 out of 568 in April.


Service Comment

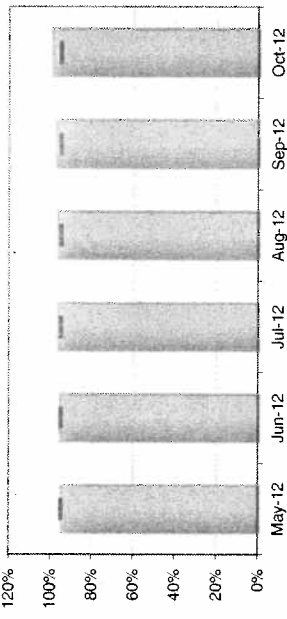
Long term trend (last 6 years)	Key	2007/08	2008/09	2009/10	2010/11	2011/12	2012/13	Traffic Light
Haringey		-	-	-	33.0%	35.0%	34.5%	Amber 
Haringey Target	-	-	-	-	-	38%	38%	



There is currently no available benchmarking for this indicator. Strategy and Business Intelligence undertake regular environment scanning to ensure that benchmarking data is as complete and up to date as possible

Op382 Children in Care visits (% of visits due which were completed within the 6 week timescale)

Recent trend (last 6 months)	Key	May-12	Jun-12	Jul-12	Aug-12	Sep-12	Oct-12	Traffic Light
Haringey		94.8%	95.4%	96.5%	96.3%	96.9%	99.1%	Green
Haringey Target	-	95%	95%	95%	95%	95%	95%	




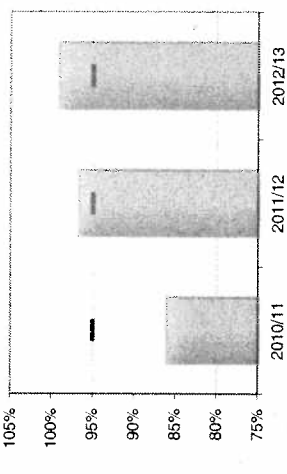
Performance Comment

- 99.1% of children in care visits are up to date, well above the 95% target and an improvement on the September position.
 - This is based on a 6 week timescale or for lower risk children 3 monthly timescale where this has been notified to performance. 5 visits were missed and the reasons why each of these visits were not made are known and tracked.

Service Comment

Whilst the current performance levels are high, the service strive to achieve 100% of visits in time.

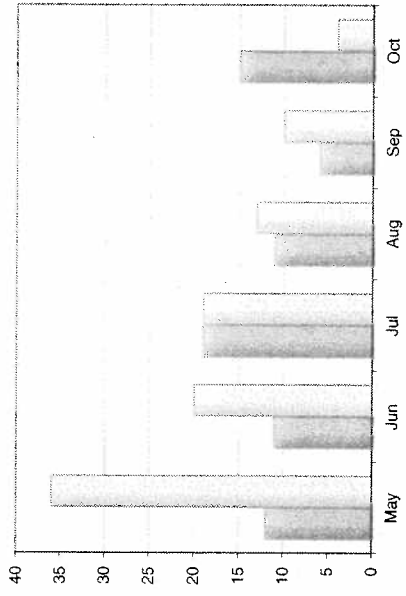
Long term trend (last 6 years)	Key	2007/08	2008/09	2009/10	2010/11	2011/12	2012/13	Traffic Light
Haringey		-	-	-	86.1%	96.7%	99.1%	Green
Haringey Target	-	-	-	-	95%	95%	95%	



There is currently no available benchmarking for this indicator. Strategy and Business Intelligence undertake regular environment scanning to ensure that benchmarking data is as complete and up to date as possible

Op417 Care Proceedings Initiated- (No. of children)

Recent trend (last 6 months)	Key	May-12	Jun-12	Jul-12	Aug-12	Sep-12	Oct-12	Traffic Light
Haringey		12	11	19	11	6	15	Data Only
Haringey (previous year)		36	20	19	13	10	4	



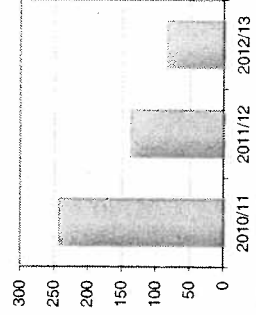
Performance Comment

- There were 15 children (10 families) where care proceedings were initiated in October and 83 (57 families) in the year to date.
- The year to date figure is lower than the 107 care proceedings initiated by this point last year.

Service Comment

There has been a reduction in the number of care proceedings issued compared to the same period last year. Care proceedings are monitored at the monthly joint Legal Services and Children and Families meetings to ensure court processes are used appropriately.

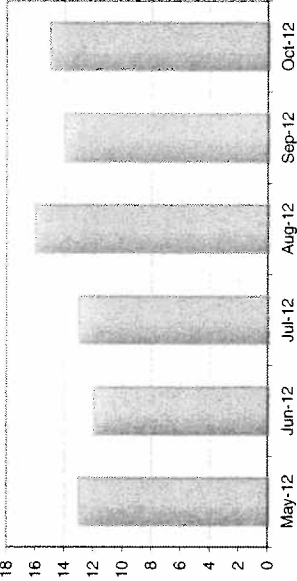
Long term trend (last 6 years)	Key	2007/08	2008/09	2009/10	2010/11	2011/12	2012/13	Traffic Light
Haringey		-	-	-	243	137	83	Data Only



There is currently no available benchmarking for this indicator. Strategy and Business Intelligence undertake regular environment scanning to ensure that benchmarking data is as complete and up to date as possible

Op 419 Number of children missing/absconded from care at any point in the month

Recent trend (last 6 months)	Key	May-12	Jun-12	Jul-12	Aug-12	Sep-12	Oct-12	Traffic Light
Haringey		13	12	13	16	14	15	Data Only



Performance Comment


- 15 children were missing from care during the month of October.
- 2 (plus 1 child whose whereabouts are known) remained missing at the end of the month.
- The number of children missing is lower than the level seen this time last year.
- There has been a slight increase in the quarterly numbers which monitor children who have gone missing in the 3 month period and do not include duplicate children which have gone missing in more than one month.

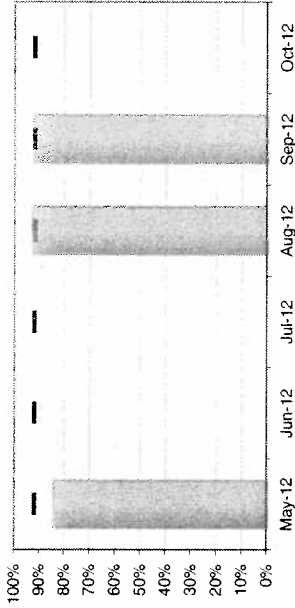
Service Comment

An exercise was undertaken with assistance from the performance team to look at all the children/young people who have gone missing/absconded over the last 12 months (From November 2011 - October 2012), with the number of times they went missing/absconded over the year. Overall we are left with about 6 persistent absconders under age of 16, the exercise has been helpful in identifying which young people need particular input/support.

There is currently no available benchmarking for this indicator. Strategy and Business Intelligence undertake regular environment scanning to ensure that benchmarking data is as complete and up to date as possible

OP386 (NI Children in care cases which were reviewed within required timescales

Recent trend (last 6 months)	Key	May-12	Jun-12	Jul-12	Aug-12	Sep-12	Oct-12	Traffic Light
Haringey	84.1%	-	-	-	92.9%	92.4%	-	Green
Haringey Target	92%	92%	92%	92%	92%	92%	92%	




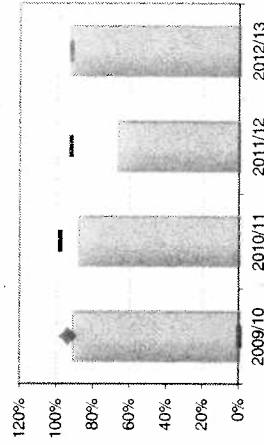
Performance Comment

-A localised system for reporting has given a figure of 92.4% for September but a figure is unavailable for October.

Service Comment

The service have created a localised report which provides the data and use this as a means of monitoring reviews carried out in timescale. This work is done a month in arrears.

Long term trend (last 6 years)	Key	2007/08	2008/09	2009/10	2010/11	2011/12	2012/13	Traffic Light
Haringey	-	-	-	91.1%	87.8%	66.5%	92.4%	Green
Haringey Target	94%	-	-	-	98%	92%	92%	
London	93%	92%	94%	-	-	-	-	



These measures relate to the stability of placements of looked after children. The first (HY62) is based on the number of placements each child in the cohort has experienced. It gives the percentage of children who have had three or more placements during the last year (the figures shown are therefore for a rolling year e.g. June 2011 to July 2012). The second measure (Op63) is based on the length of placement; it gives the percentage of all children who have been in care for at least 2.5 years who have been in the same placement for at least 2 years.

HY62 Stability of placements of looked after children: number of moves

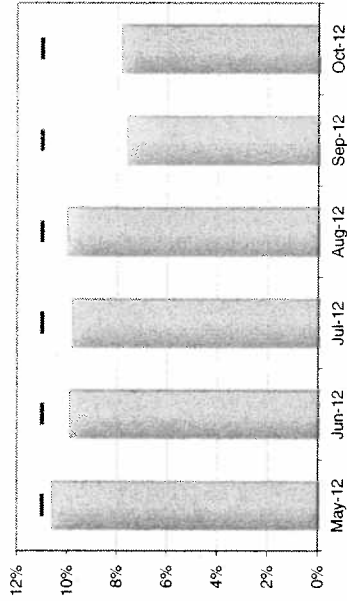
Recent trend (last 6 months)	Key	May-12	Jun-12	Jul-12	Aug-12	Sep-12	Oct-12	Traffic Light
Haringey		10.6%	9.9%	9.8%	10.0%	7.6%	7.8%	Green
Haringey Target	-	11%	11%	11%	11%	11%	11%	

Performance Comment

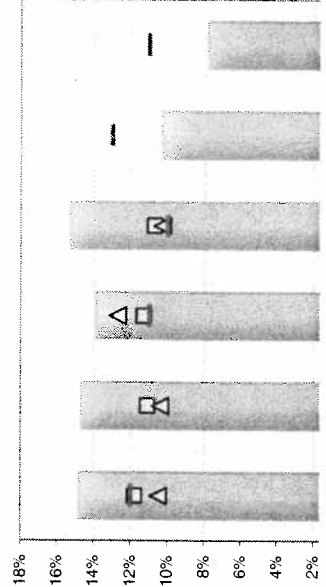
- 42 out of 536 (7.8%) looked after children have had 3 or more placements in the last year.
- This is within the target and lower than our statistical neighbours (10.3% for 2010/11).
- The number of children with two placements is also tracked and appears to be increasing (80 or 14.9% as at October).

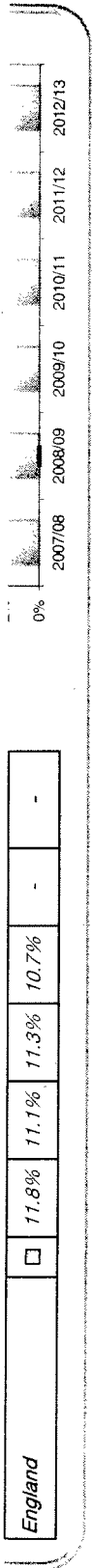
Service Comment

Not all moves are 'bad' moves as some children move to be adopted. The aim is that as far as possible we get the right placement at the point the child first comes into care and that each plan considers a child's long term needs. The Commissioning and Placements team are undertaking an exercise to look at the proportion of children that have moved onto permanency this year. In addition work is being undertaken to ensure that the monitoring of providers is more systematic and proactive with the aim of minimising placement breakdown at the earliest stage.



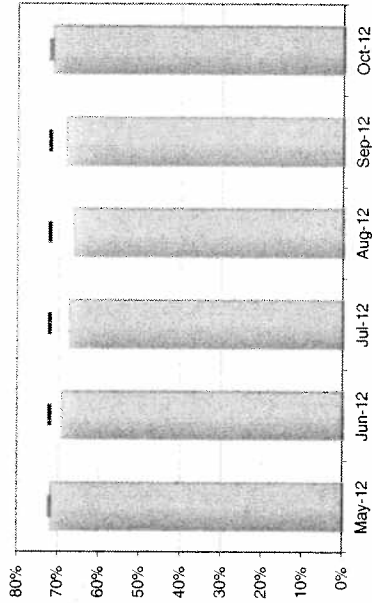
Long term trend (last 6 years)	Key	2007/08	2008/09	2009/10	2010/11	2011/12	2012/13	Traffic Light
Haringey		14.8%	14.7%	13.9%	15.3%	10.3%	7.8%	Green
Haringey Target	-	12%	-	11%	10%	13%	11%	
Statistical Neighbours	Δ	10.5%	10.4%	12.7%	10.3%	-	-	
London	◆	11.2%	11.1%	11.4%	-	-	-	





Op63 Stability of placements of looked after children: length of placement

Recent trend (last 6 months)	Key	May-12	Jun-12	Jul-12	Aug-12	Sep-12	Oct-12	Traffic Light
Haringey		71.8%	68.9%	67.2%	66.3%	68.1%	71.4%	Amber
Haringey Target	■	72%	72%	72%	72%	72%	72%	

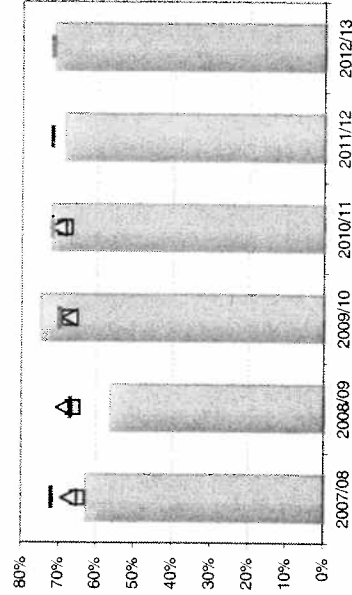


Performance Comment

- 71.4% of children under 16 (137 out of 192 cohort) who have been in care for 2.5 years have been in the same placement for at least 2 years.
- There has been a steady decline since 2009/10 although the numbers in care for 2.5 years have been increasing (192 at October 2012 compared with 158 at October 2011).
- Performance is slightly lower than the target of 72% and similar to statistical neighbour average.

Service Comment

Long term trend (last 6 years)	Key	2007/08	2008/09	2009/10	2010/11	2011/12	2012/13	Traffic Light
Haringey		62.7%	56.3%	75.0%	72.0%	68.6%	71.4%	Amber
Haringey Target	■	72%	67%	70%	72%	72%	72%	
Statistical Neighbours	△	67.3%	68.7%	67.3%	70.4%	-	-	
London	◆	66.8%	68.0%	66.6%	-	-	-	
England	□	65.0%	66.2%	67.4%	68.6%	-	-	



These measures are based on young people who turn 19 in the month; 65 young people are due to turn 19 in 2012/13. Monthly percentages for this indicator are therefore based on small numbers and should be interpreted with care. The status of the young people concerned needs to be in established within four months of leaving care otherwise they cannot be counted as in EET or in suitable accommodation. Accommodation is deemed suitable if it provides safe, secure and affordable provision for young people.

Op147 Care leavers in suitable accommodation

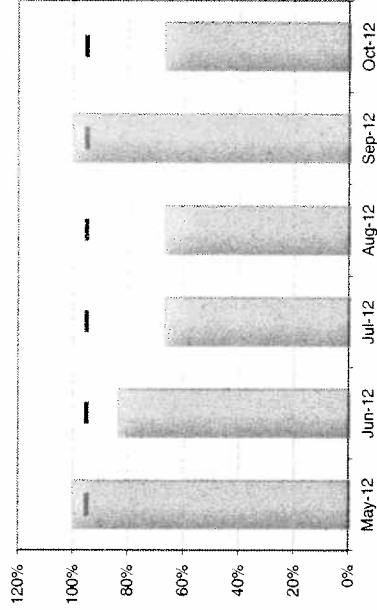
Recent trend (last 6 months)	Key	May-12	Jun-12	Jul-12	Aug-12	Sep-12	Oct-12	Traffic Light
Haringey		100%	83%	67%	67%	100%	67%	Red
Haringey Target	—	95%	95%	95%	95%	95%	95%	

Performance Comment

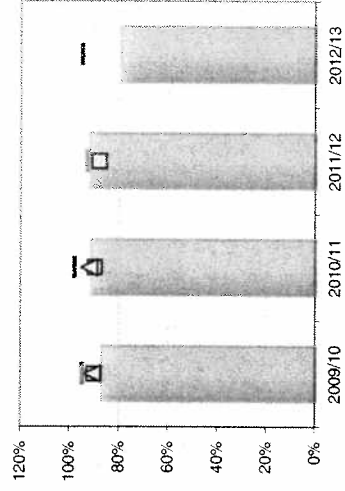
- 79% (27 out of 34) of care leavers for the year to date were in suitable accommodation.
 - This is below the target of 95% and lower than the England figure (88% for 2011/12).
 - 2 out of the 3 young people in Octobers cohort were in suitable accommodation. We were not in touch with the third young person.

Service Comment

The numbers are small and data needs to be interpreted with care. The target set is very challenging especially when one considers the high numbers of unaccompanied asylum seeker care leavers in Haringey which present challenges as many have no recourse to public funds and some have issues with immigration status which prevents them from studying or getting a job.

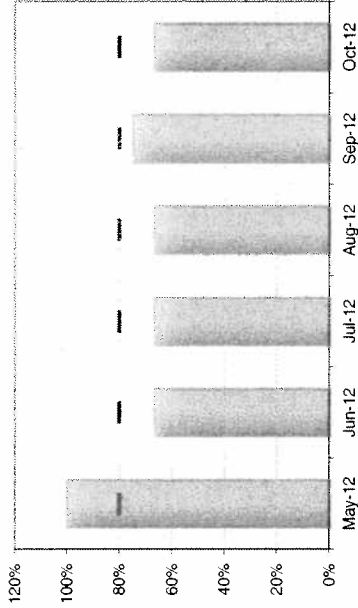


Long term trend (last 6 years)	Key	2007/08	2008/09	2009/10	2010/11	2011/12	2012/13	Traffic Light
Haringey		-	-	87%	92%	92%	79%	Red
Haringey Target	—	95%	95%	95%	98%	93%	95%	
Statistical Neighbours	Δ	92%	89%	91%	92%	-	-	
London	◆	90%	88%	-	-	-	-	
England	□	88%	90%	90%	90%	88%	-	



Op148 Care leavers in education, employment or training

Recent trend (last 6 months)	Key	May-12	Jun-12	Jul-12	Aug-12	Sep-12	Oct-12	Traffic Light
Haringey		100%	67%	67%	67%	75%	67%	Red
Haringey Target	-	80%	80%	80%	80%	80%	80%	●



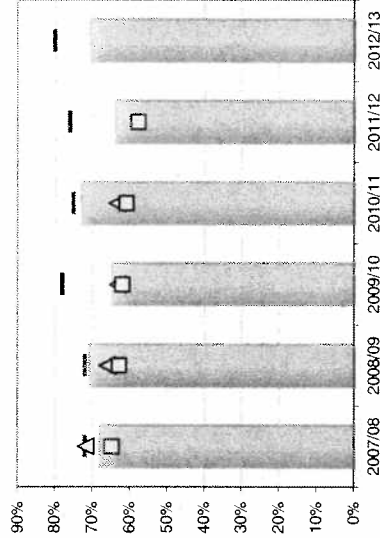
Performance Comment

- As at the end of October 24 out of 34 care leavers (71%) were in education, employment or training (EET) below the 80% target.
 - This figure compares favourably with statistical neighbours and is well above the England figure (58% for 2011/12).

Service Comment

The numbers are small and data needs to be interpreted with care. The target set is very challenging especially when one considers the England average of 58%. In Haringey high numbers of unaccompanied asylum seeker care leavers present further challenges in this area as many have no recourse to public funds and some have issues with immigration status which prevents them from studying or getting a job.

Long term trend (last 6 years)	Key	2007/08	2008/09	2009/10	2010/11	2011/12	2012/13	Traffic Light
Haringey		68%	71%	65%	73%	64%	71%	Red
Haringey Target	-	72%	72%	78%	75%	76%	80%	●
Statistical Neighbours	△	72%	66%	63%	63%	-	-	
London	◆	68%	65%	67%	-	-	-	
England	□	65%	63%	62%	61%	58%	-	



Adoption and Special Guardianship Orders

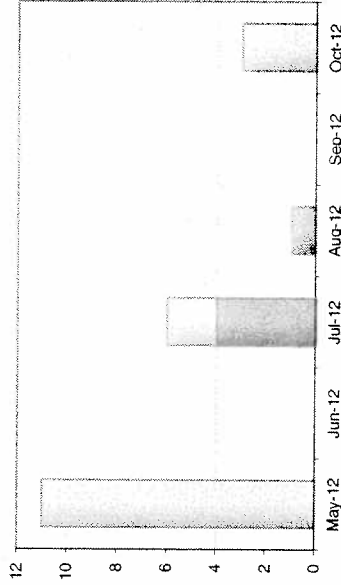
This section provides information on the volume of adoptions and special guardianship orders and the timeliness of placements of looked after children for adoption following an agency decision (% placed within 12 months). It also provides a monthly update on the three key adoption scorecard indicators A1, A2 and A3 relating to the timeliness of the adoption process. For further long term trend data, benchmarking, contextual data and performance against national adoption indicators, please refer to Appendix B, the Adoption Scorecard quarterly update. Please note that this is only updated quarterly due to the relatively small number of children involved - more regular updates may be misleading as small variations can skew the outcomes.

Op 418 Number of adoptions/special guardianship orders
 Op 418a Number of adoptions
 Op 418b Number of special guardianship orders (SGOs)

Recent trend (last 6 months)	Key	May-12	Jun-12	Jul-12	Aug-12	Sep-12	Oct-12	Traffic Light
Haringey (Adoptions and SGOs)		11	3	6	1	0	3	Data Only
Haringey- Adoptions		0	0	4	1	0	0	
Haringey- SGOs		11	0	2	0	0	3	

Performance Comment

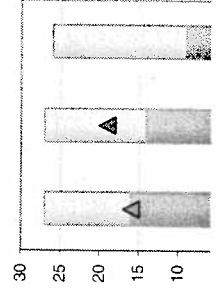
- There were 3 SGOs and no adoptions in October.
- There have been 9 adoptions in the year. The target set for adoptions is 15 and we are on track to meet this. This compares with 7 adoptions and 7 SGOs at this point last year.
- There have been 17 special guardianship orders in the year to date; more than there were in all 2011/12.
- The 903 comparative data for 2011/12 showed that of the children who ceased to be looked after in the year 5% were adopted, this compares to 8% in London and 9% in our comparator authorities, the highest being Hackney at 17%.



Service Comment

Although there were no adoptions in September or October, as at the end of October there were 66 children with an adoption plan.

Long term trend (last 6 years)	Key	2007/08	2008/09	2009/10	2010/11	2011/12	2012/13	Traffic Light
Haringey (Adoptions and SGOs)		-	-	-	27	27	26	Data Only
Haringey- Adoptions		-	-	-	16	14	9	
Haringey- SGOs		-	-	-	11	13	17	

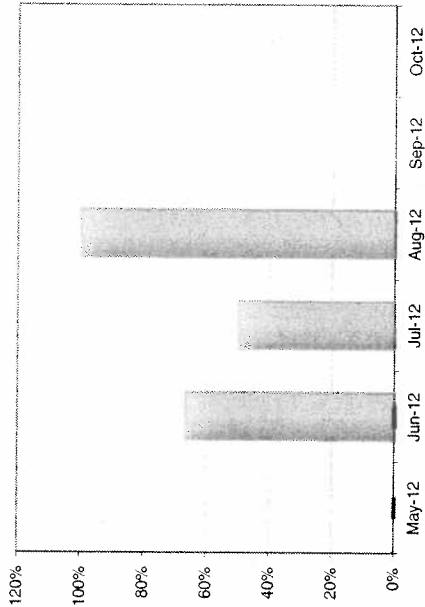


<i>Stat. Neighbours (adoptions only)</i>	▲	18	17	17	16	19	-
--	---	----	----	----	----	----	---



Op391 (NI) Timeliness of placements of looked after children for adoption following an agency decision that the child should be placed for adoption

Recent trend (last 6 months)	Key	May-12	Jun-12	Jul-12	Aug-12	Sep-12	Oct-12	Traffic Light
Haringey		-	67%	50%	100%	-	-	No Target set
Haringey Target	■	-	-	-	-	-	-	



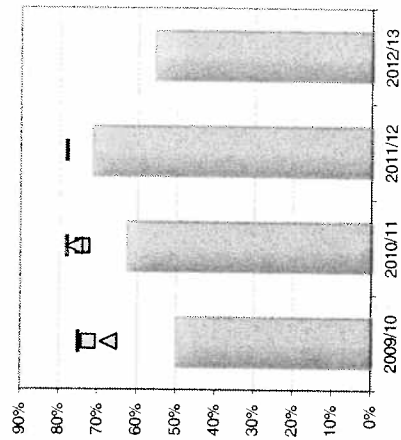
Performance Comment

- No adoptions in September or October
- This indicator is viewed in conjunction with the new adoption scorecard indicators listed below.
- In the year to October 5 out of 9 looked after children (56%) were placed for adoption within 12 months of the decision that they should be placed for adoption.
- This represents a decline in performance from 2011/12 (71%) and is below latest benchmarking data for statistical neighbours (76% in 2010/11).

Service Comment

This indicator remains challenging as once the 12 months have passed, the target is not met, regardless of how long or how soon afterwards the child is placed. Permanency tracking processes are in place and increased management through adoption linking meetings will assist in achieving the target of adoption within 21 months; the new adoption scorecard indicator.

Long term trend (last 6 years)	Key	2007/08	2008/09	2009/10	2010/11	2011/12	2012/13	Traffic Light
Haringey				50%	63%	71%	56%	No Target
Haringey Target	■	72%		75%	78%	78%	78%	
Statistical Neighbours	△	66%	79%	67%	76%	-	-	
London	◆	71%	77%	74%	-	-	-	
England	□	76%	75%	72%	74%	-	-	

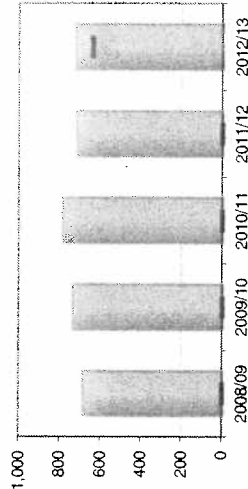
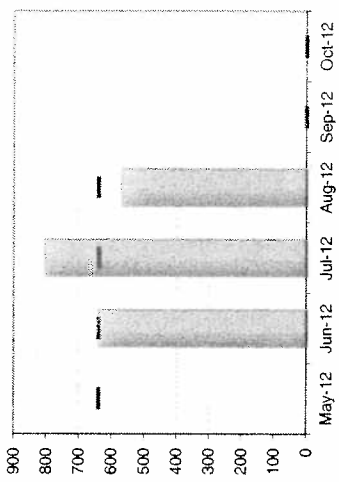


HY483

Average days from becoming looked after to being placed for adoption for children adopted in period (Adoption Scorecard Indicator A1)*

* This figure relates to adopted children only (it excludes children placed for adoption)

Recent trend	Key	May-12	Jun-12	Jul-12	Aug-12	Sep-12	Oct-12	Traffic Light
Haringey		N/A	639	805	571	N/A	N/A	Red
National Threshold	—	639	639	639	639	-	-	●



Performance Comment

- No adoptions in September or October
- The average days from becoming looked after to being placed for adoption was 722 days for the period April to October 2012. This is above the 639 day threshold maximum(rolling 3 years) which is based on national threshold levels for 2010-2013 and slightly above the 2011/12 figure of 715 days.
- For the 16 children placed for adoption this year the average days from becoming looked after to being placed for adoption was 737 days and 315 days from decision on suitability to adoption.
- The service have set targets for new children coming into the system. Targets of 184 days from expression of interest to decision on suitability to adopt and 118 days (3 months) from receipt of application to decision on suitability have been proposed.

Service Comment

There are changes to be introduced to regulations on some of these measures. There is to be a 2 month pre qualification phase which consists of information giving and basic preparation, plus medicals and CRB checks. This is then followed by acceptance of the application and the preparation and assessment period which has to be completed in 4 months. We are identifying children for families during the assessment process so that we can place as soon as possible after the placement order, and to avoid adopters waiting too long for a Haringey match and going elsewhere. Given the factors which can impact on making a placement, mainly associated with the court process, a target of 18 days, or 3 months, is realistic. We plan to achieve placement in a shorter period than this, of course. When the regulations are changed in the New Year we may need to make some adjustments to these targets, as we expect they will be more prescriptive and precise.

Long term trend	Key	2007/08	2008/09	2009/10	2010/11	2011/12	2012/13	Traffic Light
Haringey		-	686	736	784	715	722	Red
National Threshold	—	-	-	-	-	-	639	●

Three year average	2008-11	2009-12
Haringey	739	749
Statistical Neighbours	717	


<i>England</i>	625	636
----------------	-----	-----

Op486

Placed for adoption within 21 months of becoming looked after

(Adoption Scorecard Indicator A3)*

* This figure relates to adopted children and children placed for adoption. Figures shown are year to date figures as at the end of the month indicated.

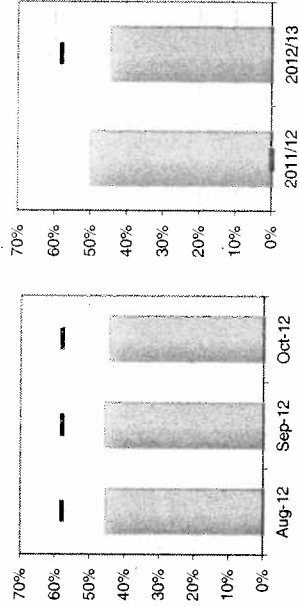
Recent trend	Key	May-12	Jun-12	Jul-12	Aug-12	Sep-12	Oct-12	Traffic Light
Haringey	38%	41%	41%	45%	46%	44%	58%	Red
Provisional Target	58%	58%	58%	58%	58%	58%	58%	


Performance Comment

-As at October 44% (12 out of 27) children were placed for adoption within 21 months of becoming looked after. This is below the provisional target (based on the national average)

Service Comment

The increased volume of placements includes children who have been looked after for some considerable time which impacts negatively on the percentage placed within 21 months. We expect an improvement in the timescales for adoption in the longer term, but as we are dealing with relatively small numbers and as many of these have been looked after for some time this will impact on the rolling 3 year averages reported in the adoption scorecard. A new indicator has been introduced (A10) which measures the same as (A1) with the exception that for time spent with foster carers who go on to adopt the child, the time is measured until the date they moved in with their foster carer rather than the officially 'placed' date. In Haringey the average days for A10 was 647 compared with 546 for England. This measure is expected to be advantageous to Haringey as it will enable us to demonstrate improvement by allowing us to exclude some of the time for a few children who spent exceptionally long periods of time in care before being adopted and thus not skewing the averages in a negative way.



Long term trend	Key	2007/08	2008/09	2009/10	2010/11	2011/12	2012/13	Traffic Light
Haringey	-	-	-	-	-	50%	44%	Red
Provisional Target	-	-	-	-	-	-	58%	

Three year average	2008-11	2009-12
Haringey	41%	41%
Statistical Neighbours	54%	
England	58%	

Average time between a local authority receiving court authority to place a child and the local authority deciding on a match to an adoptive family (days)
(Adoption Scorecard Indicator A2)

Performance Comment

- The England 3 year average has increased from 171 (2008-11) to 195 (2009-12)
- Our statistical neighbours average (2008-11) is 132
- Haringey's 3 year average (2008-11) is 239 days reducing marginally to 238 days (2009-12).
- The national threshold for 2010-13 is 213 days, so based on 2009-12 levels Haringey is 25 days short of the threshold.
- Measuring progress on this indicator is reliant on CAF/CASS releasing data at local authority level.

Three year average	2009-12
Haringey	238
<i>Statistical Neighbours</i>	-
<i>England</i>	195

Service Comment

Monitoring systems and additional resource are speeding up family work. The numbers will come down as the numbers of children who have already waited a long time are placed.